

---

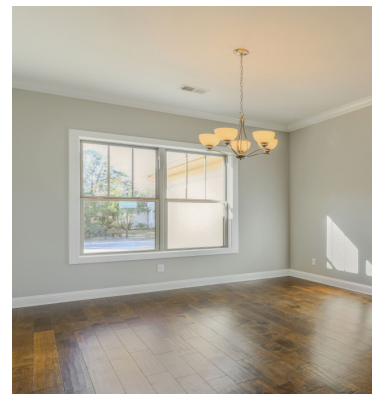
# The Pikeview

---



## Details

- 1,970 square feet
- 55 ft. original plan width
- 3 bedroom, 2 bath
- 10 ft. ceilings
- 2 x 6 exterior walls to ensure energy efficiency and a stronger structure
- Low-Maintenance James Hardie siding
- 50-Year architectural shingles
- 2-10 Home Buyers Warranty
- Architectural detail such as cedar board & batten, shutters, tumbled brick and tin accents
- Solid Maple Cabinetry with Granite Countertops
- Up to 3% credit towards buyer closing costs



**READDICK**  
CONSTRUCTION

*Building the future. Restoring the past.*

Choose your floor plan, and let us show you how you can choose your options to make it uniquely yours. Contact us for more information on this floor plan, or visit us online to view additional floor plans.



912-729-5555 • 47 Readdick Ave, Kingsland, GA • [www.ReaddickConstruction.com](http://www.ReaddickConstruction.com)

# The Pikeview



*Building the future. Restoring the past.*

Readdick Construction reserves the right to change the floor plans, specifications & pricing without notice. Upgraded features such as flooring, appliances, countertops and many other features shown in a spec home may not be included in the base price.

